

# St Francis School Newsletter



## Diary Dates

- **Half Term**  
W / B 17th February
- **INSET**  
Monday 24th February
- **Pupils return**  
Tuesday 25th February
- **INSET**  
Thursday 13th March
- **Easter lunch**  
Thursday 3rd April
- **Spring Term Ends**  
Friday 4th April 1pm
- **Summer Term Begins**  
Tuesday 22nd April
- **Campus Week**  
W / B 12th May
- **Half Term**  
W / B 26th May
- **INSET**  
Tuesday 24th June

## Head Teacher's Message

The wet and windy weather continues. Luckily we have escaped the worst of the floods. The school grounds are saturated. Pete, our site manager, has roped off the worst areas but some children are still determined to play in the mud!

This week we are holding another round of interviews for a deputy head teacher. I hope this time we will be successful. In the meantime, I thank you all for your patience and support.

We are planning some very exciting and fun drama events for later in the year. Details will be sent out to you soon. I would like to welcome Mrs Cadogan to the school governing body. She is our new parent representative.

Please look at our new web site. It is still in the process of being updated but it is a great improvement.

Best wishes,

Steve Hollinghurst



Mary getting messy  
painting boxes

## Messy Friday

Class 3J enjoy cooking on Friday morning. Making a mess and gaining new skills.



Jack measuring



Edeve rubbing in



Cameron mixing

## Activities at QE2 Centre

'Outdoor and adventurous activities' is one of the Tuesday Options for the senior School and JCH. We enjoy a series of different challenging experiences and enjoy working with the specialist staff at the centre. This term the activities have included:



Archery



Zip wire



Climbing

## Penguin Class get ready to go into Space!



Jack and Joshua ready for lift off!



Children in Penguin Class have been really enjoying their Space and Sky topic this term. Recently they have been listening to space music and making rockets and space helmets!

The astronauts prepare for take off!



## Blast Off!!

Turtle class have been exploring space and looking at rockets. We have enjoyed the anticipation of the blast off and watching and hearing the rockets zoom into space.

Leah using a switch to launch the rocket



Model rocket made by James



Lily making sure Teddy is ready for lift off!

## FUNDRAISING!

A big thank you to everyone who came down to the Penny Collecting in Whiteley—we raised over £100 on a wet winters' day!

I am currently organising a Quiz Night in March—letters to follow shortly.

As I am self funding the trip, ALL money raised will go directly to the pupils of St Francis School to buy resources and equipment.

Thank you, Hayley.

Online sponsoring now up and running for Hayley's Himalayan Hike:  
<https://mydonate.bt.com/fundraisers/hayleyhimalayas>

### Don't forget, we're collecting.....

#### USED STAMPS

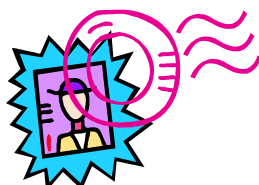
Please save your used postage stamps. Naomi House collects them to raise much needed funds.

All types of used British and Foreign stamps are collected.

Please ensure that the stamps are complete.

If you come into school, there is a collection box near the office, or just send them into school in an envelope marked "used stamps".

Thank you



NEW WEBSITE!!

St Francis Online

[www.stfrancisschool.co.uk](http://www.stfrancisschool.co.uk)



What



is

the

weather



today?



raining



sunny



cold



snow



wind



thunder



lightning



icy

**SCHOOL HOLIDAY DATES FOR 2013 – 2015**

**Last Day of Summer Term 1pm Tuesday 23<sup>rd</sup> July**

School Breaks on :-

Return to School on :-

**STAFF ONLY**

Tuesday 3<sup>rd</sup> September 2013

(Tuesday 3<sup>rd</sup> staff training day)

Half Term Friday 25<sup>th</sup> October 2013

Monday 4<sup>th</sup> November 2013

CHRISTMAS Friday 20<sup>th</sup> December 2013 1pm

Monday 6<sup>th</sup> January 2014

Half term Friday 14<sup>th</sup> February 2014

Monday 24<sup>th</sup> February 2014

**STAFF ONLY**

(Monday 24<sup>th</sup> staff training day)

EASTER Friday 4<sup>th</sup> April 2014 1:pm

Tuesday 22<sup>nd</sup> April 2014

Half term Friday 23<sup>rd</sup> May 2014

Monday 2<sup>nd</sup> June 2014

SUMMER Wednesday 23<sup>rd</sup> July 2014 1pm

Tuesday 2<sup>nd</sup> September 2014

Half Term Friday 24<sup>th</sup> October 2014

Monday 3<sup>rd</sup> November 2014

CHRISTMAS Friday 19<sup>th</sup> December 2014 1pm

Monday 5<sup>th</sup> January 2015

Half term Friday 13<sup>th</sup> February 2015

Monday 23<sup>rd</sup> February 2015

EASTER Thursday 2<sup>nd</sup> April 2015 1pm

Monday 20<sup>th</sup> April 2015

Half term Friday 22<sup>nd</sup> May 2015

Monday 1<sup>st</sup> June 2015

SUMMER Wednesday 22<sup>nd</sup> July 2015 1pm

return to be confirmed

**SCHOOL CLOSED**

Tuesday 3<sup>rd</sup> September 2013  
 Wednesday 20<sup>th</sup> November 2013  
 Monday 24<sup>th</sup> February 2014  
 Thursday 13<sup>th</sup> March 2014  
 MONDAY 5<sup>th</sup> May 2014  
 Tuesday 24<sup>th</sup> June 2014  
 Monday 4<sup>th</sup> May 2015

STAFF TRAINING  
 STAFF TRAINING  
 STAFF TRAINING  
 STAFF TRAINING  
 BANK HOLIDAY  
 STAFF TRAINING  
 BANK HOLIDAY

Training days for academic year 2014 – 2015 yet to be arranged.

